



GAT MONTHLY MEMBERSHIP PROGRESS REPORT

Results as of: 4/30/2022

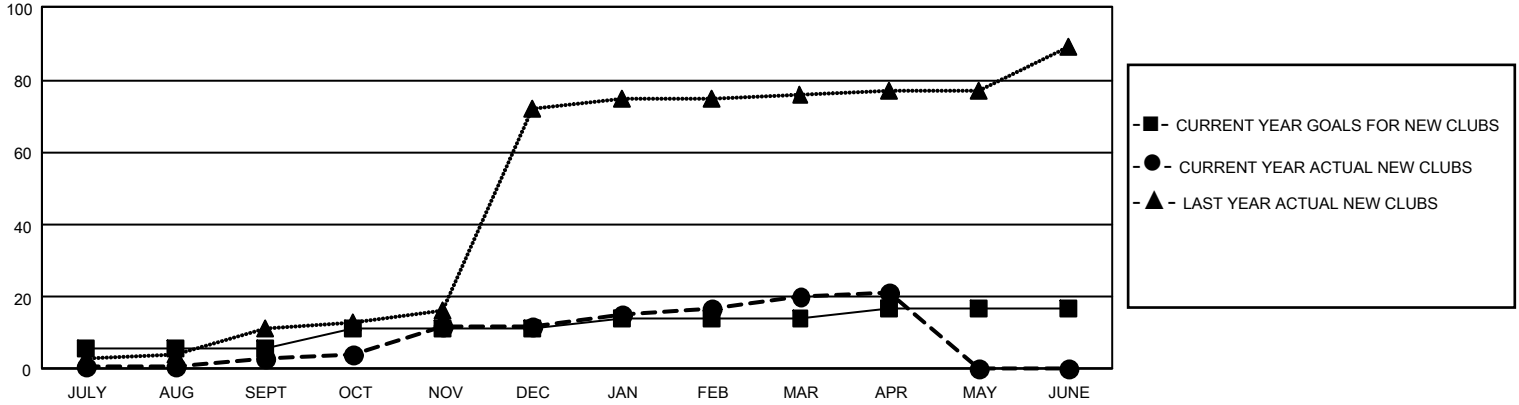
GMT Constitutional Area 6, Group F

REPORT DOES NOT INCLUDE CLUBS IN UNDISTRICTED AREAS.

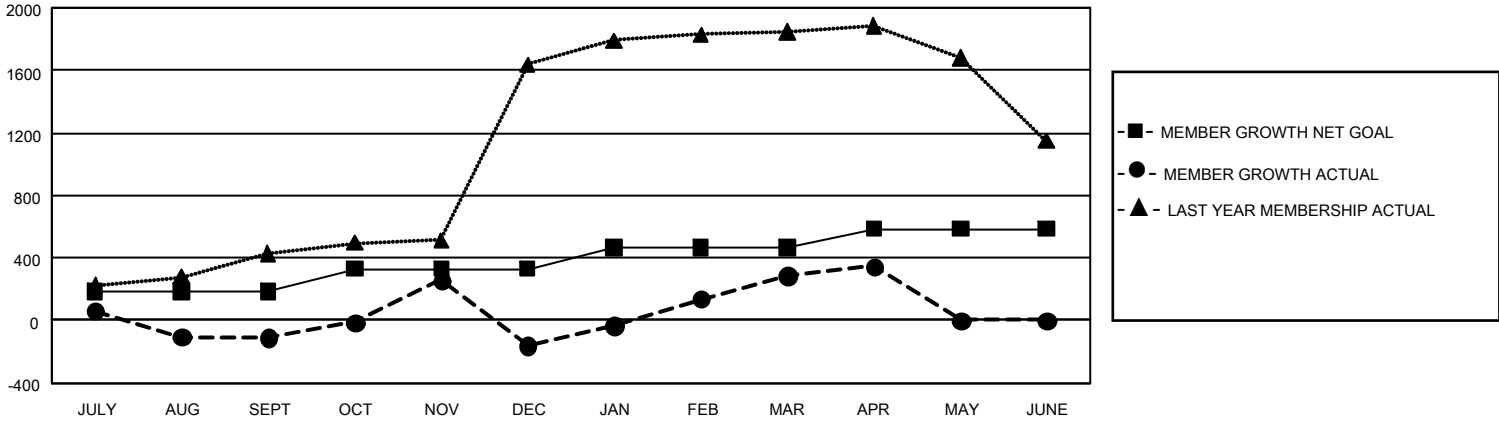
Clubs			
RESULTS FOR 2021-2022			
QUARTER	NEW CLUB GOAL	NEW CLUBS	DROPPED CLUBS
JULY/AUG/SEPT	18	3	23
OCT/NOV/DEC	15	9	14
JAN/FEB/MAR	9	8	7
APR/MAY/JUNE	9	1	2

Members			
RESULTS FOR 2021-2022			
QUARTER	MEMBER GROWTH NET GOAL	MEMBER GROWTH ACTUAL	DROPPED MEMBERS ACTUAL (including transfers)
JULY/AUG/SEPT	185	434	504
OCT/NOV/DEC	145	705	753
JAN/FEB/MAR	135	624	124
APR/MAY/JUNE	120	135	73

GOALS AND ACTUAL NEW CLUBS CUMULATIVE



GOALS AND ACTUAL MEMBERS CUMULATIVE



DROPPED CLUBS: 46	207 CLUBS OF 506 ADDED 1 OR MORE NEW MEMBERS	<u>GENDER DISTRIBUTION</u>	
		MALE 11,326 (78.99%)	FEMALE 3,005 (20.96%)
<u>DROPPED MEMBERS</u>		NON BINARY 0 (0.00%)	PREFER NOT TO ANSWER 7 (0.05%)
DECEASED 63	CLICK HERE FOR CUMULATIVE MEMBERSHIP DATA	TOTAL FAMILY UNIT MEMBERS 5,638	
CLUB CANCELLED 499		FAMILY MEMBERS PAYING HALF DUES 3,615	
OTHER 892			
TOTAL 1,454			